

PHOTO DOCUMENTATION

Appendix no. 2

to the Final Report on implementation of measures determined in EMP
for the Contract 3A.4

Odra-Vistula Flood Management Project

OVFMP Subcomponent	3A Flood Protection of Upper Vistula Towns and Cracow
Contract Task	3A.4 Extension of a section of the right embankment downstream of the Dąbie Barrage, including development of a flood gate in the area of a repair yard
Investor / Project Implementation Unit	State Water Holding Polish Waters Regional Water Management Authority in Cracow 22. Marszałka J. Piłsudskiego Street, 31-109 Cracow, Poland
Project Implementation Office (PIO)	Project Implementation Office in Cracow 22. Marszałka J. Piłsudskiego Street, 31-109 Cracow, Poland
Contractor of Works	SKANSKA S.A. 173. Solidarności Avenue, 00-877 Warsaw, Poland
Engineer	AECOM Polska Sp. z o.o. Project Office: 1. Pokoju Avenue, 31-548 Cracow, Poland

This document – forming **Appendix no. 2** to the *Final Report on implementation of measures determined in the Environmental Management Plan for Contract 3A.4* (reporting period: November 26, 2021 – October 4, 2023), presents a photo documentation regarding implementation of the EMP.



Fig. 1. Site condition in the first quarter of the works implementation period – the right Vistula embankment upstream of the Płaszów port – upper part, status in the third decade of November 2021 (view towards the west).



Fig. 2. Site condition in the first quarter of the works implementation period – the right Vistula embankment upstream of the Płaszów port – upper part, status in the third decade of November 2021 (view towards the east).



Fig. 3. Site condition in the first quarter of the works implementation period – the right Vistula embankment upstream of the Płaszów port – lower part, status in the third decade of November 2021 (view towards the west).



Fig. 4. Site condition in the first quarter of the works implementation period – the right Vistula embankment upstream of the Płaszów port – lower part, status in the third decade of November 2021 (view towards the east).



Fig. 5. Site condition in the first quarter of the works implementation period – construction site of flood gate on the Płaszów port channel, status in the third decade of November 2021 (view towards the west).



Fig. 6. Site condition in the first quarter of the works implementation period – construction site of flood gate on the Płaszów port channel, status in the third decade of November 2021 (view towards the east).



Fig. 7. Site condition in the first quarter of the works implementation period – construction site of flood gate on the Płaszów port channel, status in the third decade of November 2021 (view towards the south).



Fig. 8. Site condition in the first quarter of the works implementation period – construction site of flood gate on the Płaszów port channel, status in the third decade of November 2021 (view towards the north).



Fig. 9. Site condition in the first quarter of the works implementation period – Płaszów port channel south of the flood gate construction site, status in the third decade of November 2021 (view towards the south).



Fig. 10. Site condition in the first quarter of the works implementation period – Płaszów port channel north of the flood gate construction site, status in the third decade of November 2021 (view towards the north).



Fig. 11. Site condition in the first quarter of the works implementation period – construction site of control room building and maneuvering yard east of the flood gate, status in the second decade of November 2021 (view towards the north-west).



Fig. 12. Site condition in the first quarter of the works implementation period – construction site of maneuvering yard east of the flood gate, status in the first decade of December 2021 (view towards the north).

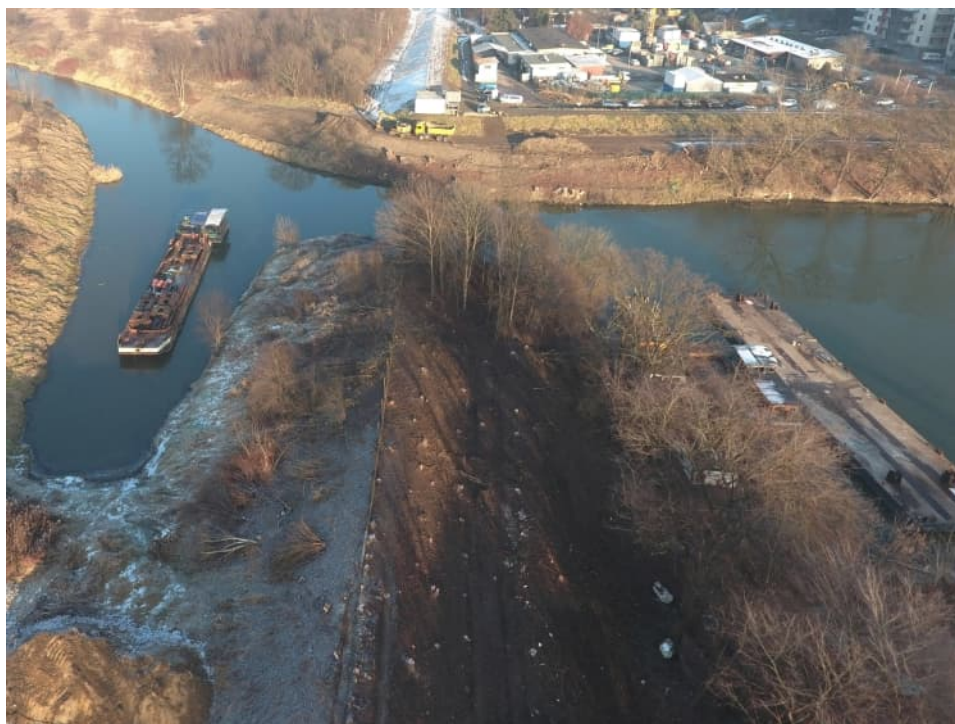


Fig. 13. Tree felling
– the right Vistula embankment upstream of the Płaszów port,
status in the second decade of December 2021 (view towards the east).



Fig. 14. Cleaning up after felling trees
– the eastern bank of the Płaszów port channel,
status in the first decade of December 2021 (view towards the south).



Fig. 15. Sapper supervision inspection before the commencement of works, status in the first decade of December 2021 (view towards the west).



Fig. 16. Works related to the organization of site facilities on the eastern bank of the Płaszów port channel, status in the third decade of November 2021 (view towards the west).



Fig. 17. Site facilities on the eastern bank of the Płaszów port channel, status in the first decade of May 2023 (view towards the west).



Fig. 18. Site facilities on the eastern bank of the Płaszów port channel, status in the third decade of February 2022 (view towards the west).



Fig. 19. Access road to the construction site on the eastern bank of the Płaszów port channel, status in the third decade of February 2022 (view towards the south).



Fig. 20. Connection of the access road to the construction site with public roads, status in the third decade of May 2022 (view towards the south).



Fig. 21. Marking of the construction site on the eastern bank of the Płaszów port channel, status in the second decade of April 2022 (view towards the north).



Fig. 22. Marking of the construction site on the eastern bank of the Płaszów port channel, status in the second decade of July 2023 (view towards the west).



Fig. 23. Protection of hazardous sites,
status in the first decade of March 2022 (view towards the west).



Fig. 24. Protection of hazardous sites,
status in the first decade of March 2022 (view towards the east).



Fig. 25. Protection of trees not intended to felling,
status in the third decade of May 2022 (view towards the west).



Fig. 26. Protection of trees not intended to felling,
status in the second decade of April 2022 (view towards the south).



Fig. 27. Preventing the spread of foreign invasive plant species
– fencing off knotweed site in the right embanked area of Vistula,
status in the third decade of May 2022 (view towards the east).



Fig. 28. Maintaining the patency of the Płaszów port channel during works,
status in the third decade of May 2022 (view towards the south).



Fig. 29. No impact of works on water environment in the Płaszów port channel, status in the third decade of March 2022 (view towards the south).



Fig. 30. Archaeological find – a mammoth bone excavated during earthworks and secured by archaeological supervision, status in the third decade of May 2022



Fig. 31. Removal of a top soil layer,
status in the third decade of December 2021 (view towards the south).



Fig. 32. Protection of top-soil piles,
status in the third decade of May 2022 (view towards the south).



Fig. 33. Dredging of the Płaszów port channel bed north of the flood gate, status in the first decade of March 2022 (view towards the west).



Fig. 34. Dredging of the Płaszów port channel bed south of the flood gate, status in the third decade of June 2022 (view towards the west).



Fig. 35. Driving the sheet piles on the western bank of the Płaszów port channel, status in the second decade of January 2022 (view towards the west).



Fig. 36. Driving the sheet piles on the eastern bank of the Płaszów port channel, status in the third decade of March 2022 (view towards the west).



Fig. 37. Construction site of flood gate in the Płaszów port channel,
status in the third decade of January 2022
(view from the western bank of the channel, towards the east).



Fig. 38. Construction site of flood gate in the Płaszów port channel,
status in the third decade of January 2022
(view from the eastern bank of the channel, towards the west).



Fig. 39. Construction site of flood gate in the Płaszów port channel,
status in the third decade of March 2022
(view from the western bank of the channel, towards the east).



Fig. 40. Construction site of flood gate in the Płaszów port channel,
status in the first decade of March 2022
(view from the eastern bank of the channel, towards the west).



Fig. 41. Construction site of flood gate in the Płaszów port channel,
status in the third decade of June 2022
(view from the western bank of the channel, towards the east).



Fig. 42. Construction site of flood gate in the Płaszów port channel,
status in the first decade of June 2022
(view from the eastern bank of the channel, towards the west).



Fig. 43. Construction site of flood gate in the Płaszów port channel,
status in the third decade of October 2022
(view from the western bank of the channel, towards the east).



Fig. 44. Construction site of flood gate in the Płaszów port channel,
status in the first decade of October 2022
(view from the eastern bank of the channel, towards the west).



Fig. 45. Construction site of flood gate in the Płaszów port channel,
status in the first decade of March 2023
(view from the western bank of the channel, towards the east).



Fig. 46. Construction site of flood gate in the Płaszów port channel,
status in the first decade of March 2023
(view from the eastern bank of the channel, towards the west).



Fig. 47. Construction site of flood gate in the Płaszów port channel,
status in the second decade of April 2023
(view from the western bank of the channel, towards the east).



Fig. 48. Construction site of flood gate in the Płaszów port channel,
status in the second decade of April 2023
(view from the eastern bank of the channel, towards the west).



Fig. 49. Construction site of flood gate in the Płaszów port channel,
status in the second decade of May 2023
(view from the western bank of the channel, towards the east).



Fig. 50. Construction site of flood gate in the Płaszów port channel,
status in the second decade of May 2023
(view from the eastern bank of the channel, towards the west).



Fig. 51. Construction of maneuvering yard east of the flood gate,
status in the third decade of July 2023 (view towards the west).



Fig. 52. Construction of maneuvering yard east of the flood gate,
status in the third decade of August 2023 (view towards the east).



Fig. 53. Shaping slopes of the Vistula flood embankment upstream of the Płaszów port, status in the third decade of August 2023 (view towards the west).



Fig. 54. Shaping slopes of the Vistula flood embankment upstream of the Płaszów port, status in the first decade of March 2023 (view towards the east).



Fig. 55. Covering slopes of the Vistula flood embankment with a top-soil layer, status in the third decade of September 2023 (view towards the west).

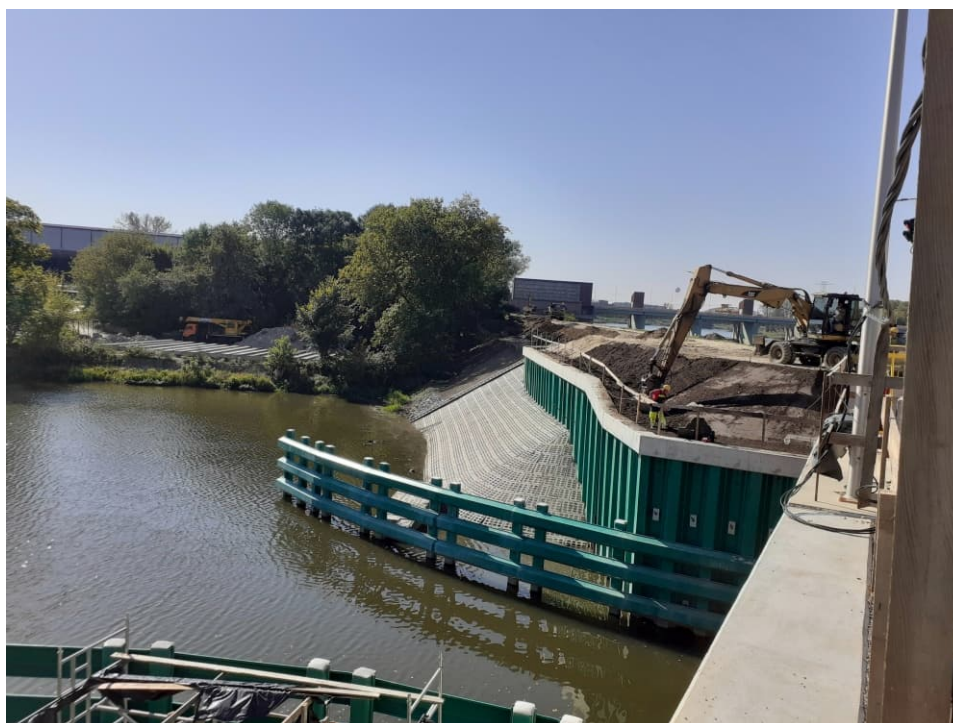


Fig. 56. Covering slopes of the Vistula flood embankment with a top-soil layer, status in the third decade of September 2023 (view towards the west).



Fig. 57. Growth of grasses sown on the slopes of the Vistula flood embankment, status in the second decade of October 2023 (view towards the west).



Fig. 58. Growth of grasses sown on the slopes of the Vistula flood embankment and on the bank slope of the Płaszów port channel, status in the third decade of September 2023 (view towards the west).



Fig. 59. Site condition in the last quarter of the works implementation period – the right Vistula embankment upstream of the Płaszów port – upper part, status in the second decade of October 2023 (view towards the west).



Fig. 60. Site condition in the last quarter of the works implementation period – the right Vistula embankment upstream of the Płaszów port – upper part, status in the second decade of October 2023 (view towards the east).



Fig. 61. Site condition in the last quarter of the works implementation period – the right Vistula embankment upstream of the Płaszów port – lower part, status in the second decade of October 2023 (view towards the west).



Fig. 62. Site condition in the last quarter of the works implementation period – the right Vistula embankment upstream of the Płaszów port – lower part, status in the second decade of October 2023 (view towards the east).

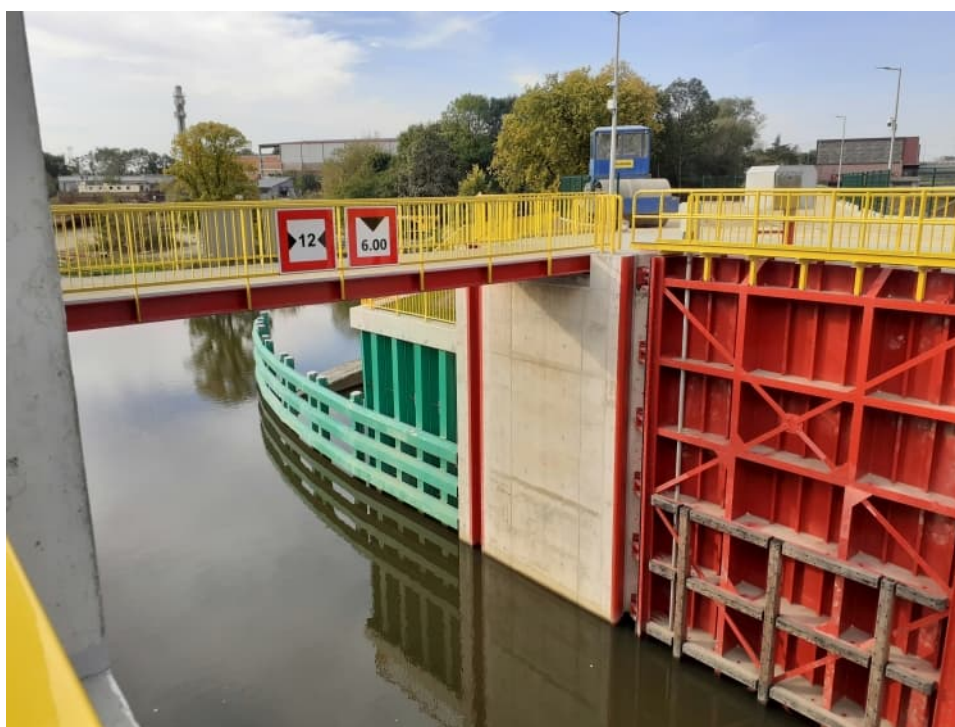


Fig. 63. Site condition in the last quarter of the works implementation period – flood gate on the Płaszów port channel – western part, status in the second decade of October 2023 (view towards the west).



Fig. 64. Site condition in the last quarter of the works implementation period – flood gate on the Płaszów port channel – eastern part, status in the second decade of October 2023 (view towards the east).



Fig. 65. Site condition in the last quarter of the works implementation period – flood gate on the Płaszów port channel – northern part, status in the second decade of October 2023 (view towards the south).



Fig. 66. Site condition in the last quarter of the works implementation period – flood gate on the Płaszów port channel – southern part, status in the second decade of October 2023 (view towards the north).



Fig. 67. Site condition in the last quarter of the works implementation period
– Płaszów port channel south of the flood gate construction site,
status in the second decade of October 2023 (view towards the south).

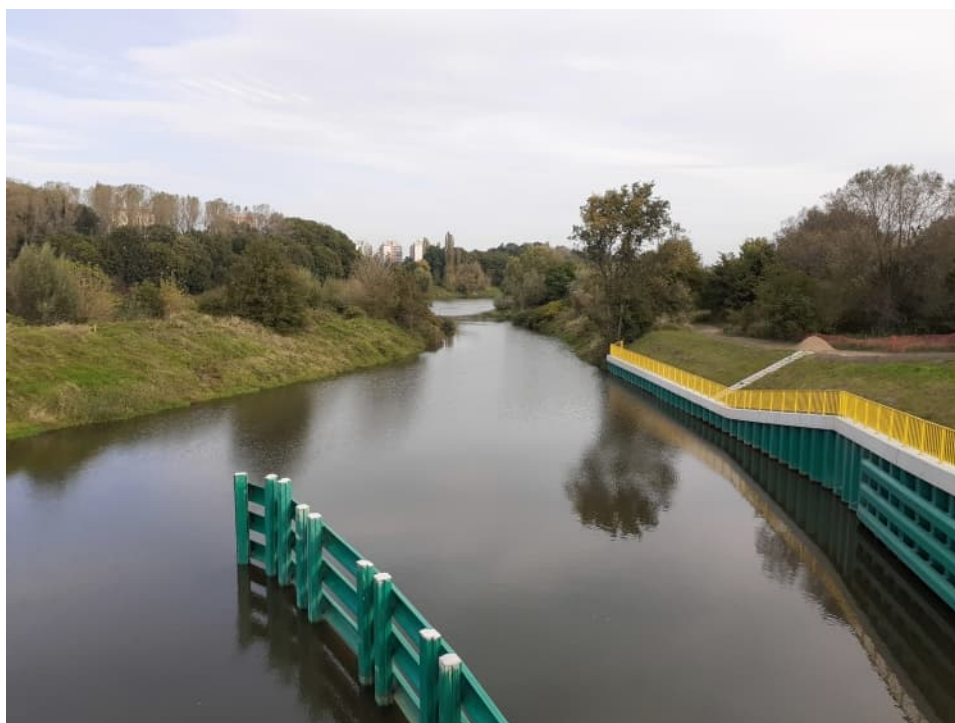


Fig. 68. Site condition in the last quarter of the works implementation period
– Płaszów port channel north of the flood gate construction site,
status in the second decade of October 2023 (view towards the north).



Fig. 69. Site condition in the last quarter of the works implementation period – control room building and maneuvering yard east of the flood gate, status in the second decade of October 2023 (view towards the west).



Fig. 70. Site condition in the last quarter of the works implementation period – maneuvering yard east of the flood gate, status in the second decade of October 2023 (view towards the east).