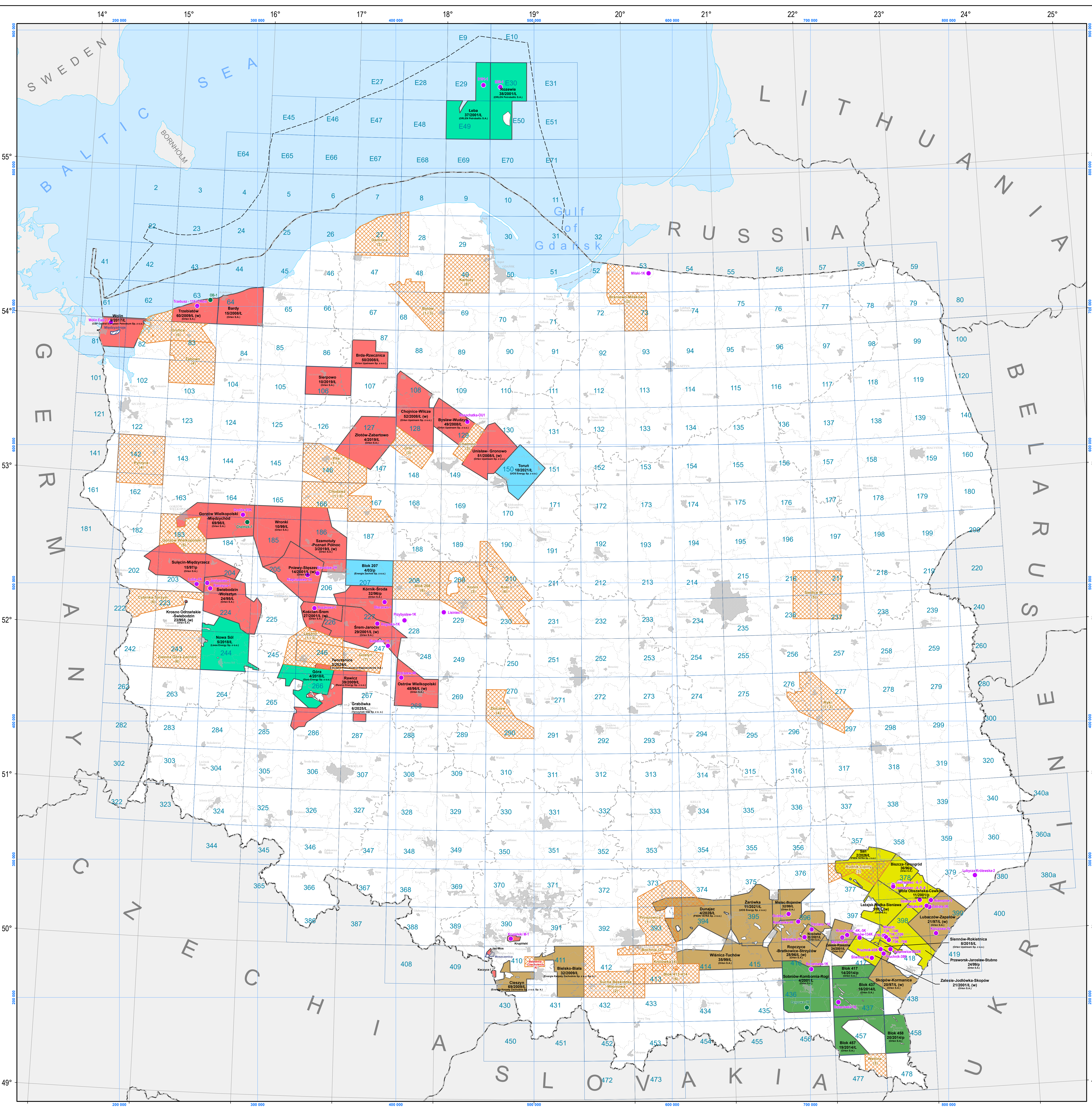


MAP OF CURRENTLY CONDUCTED DRILLING WORKS FOR NATURAL GAS AND CRUDE OIL
(BASED OF A MAP OF HYDROCARBON CONCESSIONS DIVIDED BY EXPLORATION TARGET)

AS OF 31-05-2026



EXPLANATIONS:

Exploratory boreholes for natural gas and crude oil (as of 31-05-2026)

- boreholes finalised - drilled after January 1, 2022
- boreholes in progress

Concessions for prospecting and exploration of crude oil and natural gas deposits (including joint concessions)

EXPLORATION TARGET

- Autochthonous Miocene
- Carpathian flysch
- Carpathian basement and younger structural levels
- Upper Paleozoic and Mesozoic or Mesozoic
- Upper Paleozoic
- Lower Paleozoic or Paleozoic and Mesozoic

Wronki 10/99/L concession name
10/99/L concession number
(Orlen S.A.) (entrepreneur)

(w) started extraction phase within the concession for prospecting and exploration of hydrocarbon deposits and production of hydrocarbons from deposits (investment decisions)

212 concession block number

Pending applications for granting concessions for prospecting, exploration and production of hydrocarbons (including joint concessions)

- submitted according to the article 46 of the Geological and Mining Law

Międzyzdroje pending application name

Tender areas

- Rounds 1 - 7 - finished rounds with developed geological data packages according to the article 49 ea of the Geological and Mining Law
- Złoczew** tender area name
- (4)** (tender round number)

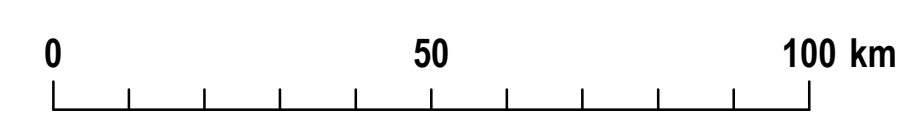
Administrative boundaries

- national border
- maritime economic zone border
- voivodeship border
- county border

Cities

- provincial city
- county town

SCALE 1: 1 000 000



Coordinate system: PL-1992